

# ST

## Sanitary Single Filter Cartridge Housing (Symmetrual Type)

Design P.	150psi
Design T.	100
Max Operating P.	150psi
Operating T.	75

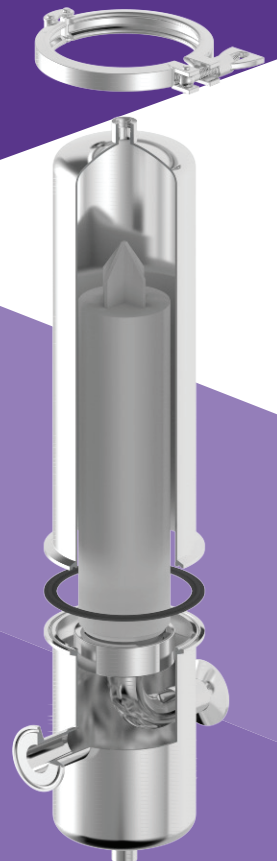
## Features

1. Symmetrual type air filter housing is designed for air filter application and also for other liquid filter applications.
2. 0.2RA surface roughness.
3. Complete inside and outside finishing with no blind spot to prevent residual dirt.
4. Tightly seal of base and shell with clamp closure prevents spillage.



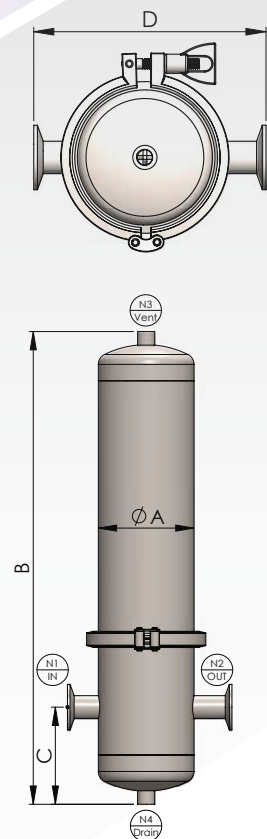
## Applications

Chemicals	RO Pre-filtration process
Petrochemical	Water filtration
Beverage Industry	Pharmaceutical
Liquor manufacture	Experiment Process
Food industry	Gas Filter
Electroplating Industry	Sewage treatment
High temperature manufacturing processes	Electronic Industry



# ST Ordering Guide

ST	1	6	5	1	C	S	PP
Model	Length	Material	Adapter	Connection ize	Connection Type	O-ring	Outside / Inside Finishes
ST	1-10" 2-20" 3-30"	4-304 6-316 6L-316L	F-DOE 5-222 7-226	21-1/2" 43-3/4" 1-1" 121-1-1/2"	150P-ANSI 10K-JIS PN10-DIN C-CLAMP PF-PTF NF-NPTF PM-PTM NM-NPTM	E-EPDM N-NBR V-VITON S-Silicon T-Teflon	E- Eletropolishing P-Polishing



## ST Specifications

Model	Qty of Filter	A m/m	B m/m	C m/m	D m/m	Weight
ST1	10"	Ø106	493	78	192	4kg
ST2	20"	Ø106	743	78	192	5.3kg
ST3	30"	Ø106	993	78	192	6.5kg